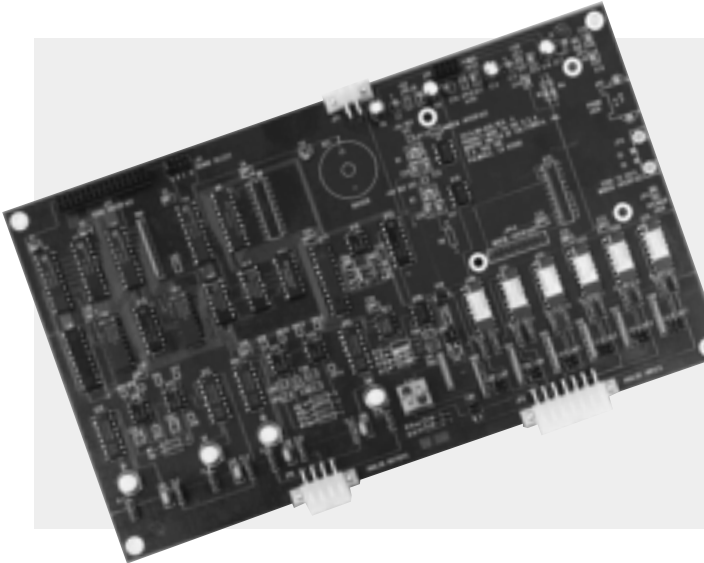


SELECTRONIC® Micro-Controller Accessory Board

Series 510

- Accessory Boards for the SELECTRONIC® Series 500 Micro-Controller
- Provides Additional Analog Input and Output Capabilities
- Microprocessor Based Logic Control Platform
- Easily Adaptable to a Variety of Equipment
- Approved for Class I, Division 2, Groups C & D, Hazardous Areas



Description

The 510 Accessory Board is offered as an option for expanding the capabilities of the Series 500 Micro-controller.

The 510 expansion boards will increase the analog input and output capability of the Series 500 controller.

Using the 510 accessory boards (two boards) can provide up to the following analog increase to the Series 500 controller:

- Twelve (12) 12-bit, 4-20 mA Analog Inputs
- Four (4) 12-bit, 0-5 VDC Analog Inputs
- Four (4) 8-bit, 4-20 mA Analog Outputs
- Four (4) 12-bit, 4-20 mA Analog Outputs

The Series 500 controller and the 510 accessory boards are microprocessor base logic control platforms. They are designed to meet the combination of control and monitoring needs associated with engine or electric motor driven equipment environments.

All Murphy Micro-controllers are user-friendly, multi-functional and easy-to-adapt to a wide variety of existing equipment.

Warranty

A two-year limited warranty on materials and workmanship is given with this Murphy product. Details are available on request and are packed with each unit.

Specifications

Analog Inputs:

Six (6) 12-bit, external 4-20 mA analog;
Two (2) 12-bit external 0-5 VDC or optional end-of-line 4-20 mA.

Analog Outputs:

Two (2) 8-bit 4-20 mA;
Two(2) 12-bit 4-20 mA.

User Set Point Adjustments:

Set through Series 500 board.

Power Supply Requirements:

-5 VDC @ 150 mA, for one (1) 510 board.

Laboratory Approvals: UL and CUL approved for Class I, Division 2, Groups C & D Hazardous Locations.

In order to consistently bring you the highest quality, full featured products, we reserve the right to change our specifications and designs at any time.



■ Frank W. Murphy Manufacturer

P.O. Box 470248; Tulsa, Oklahoma 74147; USA
tel. (918) 627-3550 fax (918) 664-6146
e-mail fwmurphy@ionet.net

■ Frank W. Murphy Southern Division

P.O. Box 1819; Rosenberg, Texas 77471; USA
tel. (281) 342-0297 fax (281) 341-6006
e-mail murphysd@intertex.net

■ Frank W. Murphy, Ltd.

Church Rd.; Laverstock, Salisbury SP1 1QZ; U.K.
tel. +44 1722 410055 fax +44 1722 410088 tlx 477088
e-mail sales@fwmurphy.co.uk

■ Frank W. Murphy Pte., Ltd.

26 Siglap Drive; Republic of Singapore 456153
tel. +65 241-3166 fax +65 241-8382
e-mail fwmsales@fwmurphy.com.sg

■ Murphek Pty., Ltd.

1620 Hume Highway; Campbellfield, Vic 3061; Australia
tel. +61 3 9358-5555 fax +61 3 9358-5558

■ Murphy de México, S.A. de C.V.

Blvd. Antonio Rocha Cordero 300, Fracción del Aguaje
San Luis Potosí, S.L.P.; México 78384
tel. +52-48-206264 fax +52-48-206336
e-mail murmexsl@infosel.net.mx

■ Murphy Switch of California

P.O. Box 900788; Palmdale, California 93590; USA
tel. (805) 272-4700 fax (805) 947-7570
e-mail sales@murphyswitch.com

■ Frank W. Murphy France

tel. +33 1 30 762626 fax +33 1 30 763989