



MAXSTREAM SERIES

Slip On Pumps - HPX400-B18

Features and Benefits

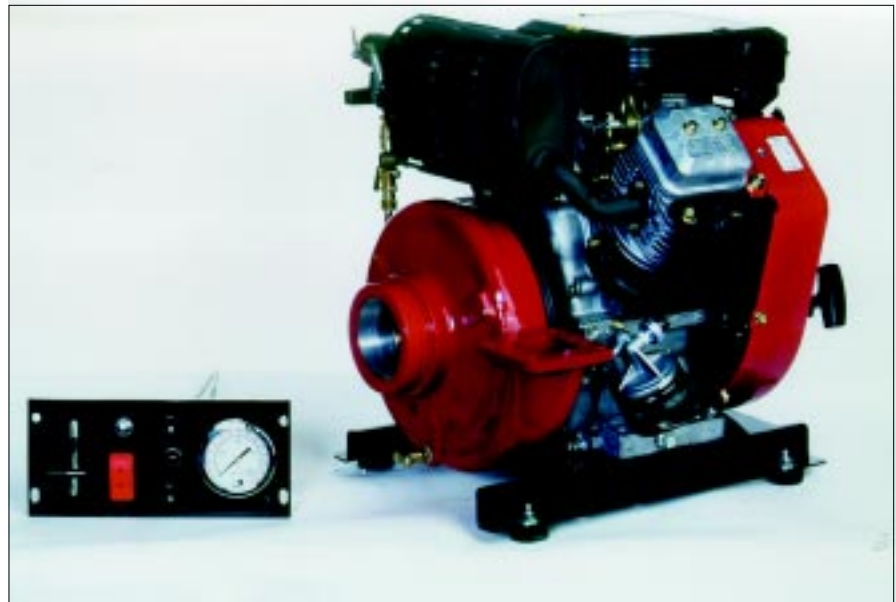
"X" Version — Configured for installation by truck builders

Exclusive Band Clamp Design – Quick and easy access for maintenance and repairs

Full Instrumentation — Instrument panel shipped loose for remote mounting

Superior Performance—High pump efficiency.

Briggs & Stratton Vanguard Engine—Quiet and powerful.



The HPX400-B18 MaxStream series pump is the newest, most exciting development in slip on pumps in years. Innovative features have been engineered to provide unparalleled performance and ease of operation.

The MaxStream model configuration is an ideal product for OEM installation. The pumping unit is attached to a steel skid plate base that can be easily mounted into any vehicle. The rail base includes all required hardware and vibration isolators. A remote instrument panel with mounted single discharge gauge and engine controls is included as standard. The suction connection has a three inch female NPT/4 inch Victaulic and a three inch NPT female discharge.

PERFORMANCE RATINGS

500 GPM @ 25 PSI
320 GPM @ 50 PSI

210 GPM @ 75 PSI
95 GPM @ 100 PSI

Priming is located at the eye of the impeller for faster priming and increased lifts.

Power is provided by the respected Briggs and Stratton Vanguard engine. The Vanguard power comes from a reliable state-of-the-art, air cooled, 18 BHP, V-twin, Overhead Valve (OHV) engine. The overhead valve design delivers more power than conventionally designed side-valve engines. It has an electric start with recoil backup to ensure starting under all conditions. All these exciting features come in a convenient compact design.

The HP MaxStream series pump also features Hale's exclusive band clamp design for quick and easy access for maintenance and repair. A bronze impeller and replaceable bronze wear rings are housed in a high strength, lightweight aluminum alloy pump housing. The unit features a self-adjusting, self-lubricating mechanical pump seal.

Every detail and feature of the HP MaxStream series has been carefully designed and built for years of operation

EQUIPMENT SPECIFICATIONS

Type: Combination pump
Suction Connection: 3 inch NPT Female, 4 inch Victaulic.
Discharge Connection: 3 inch NPT female.
Body and Volute: Aluminum.
Impeller: 8-3/4 inches (222.25 mm) silicon bronze.
Pump Shaft: Engine shaft with bronze sleeve.
Priming: Exhaust Venturi; 20 inches (508 mm) HG.
Maximum Flow: 500 GPM (1893 LPM) @ 20 PSI (1.5 BAR).
Maximum Pressure: 100 PSI (7 BAR).
Weight: 145 pounds (66 kg).
Length: 20-1/4 inches (514mm).
Width: 18 inches (457 mm).
Height: 20 inches (508 mm).

INSTRUMENTATION

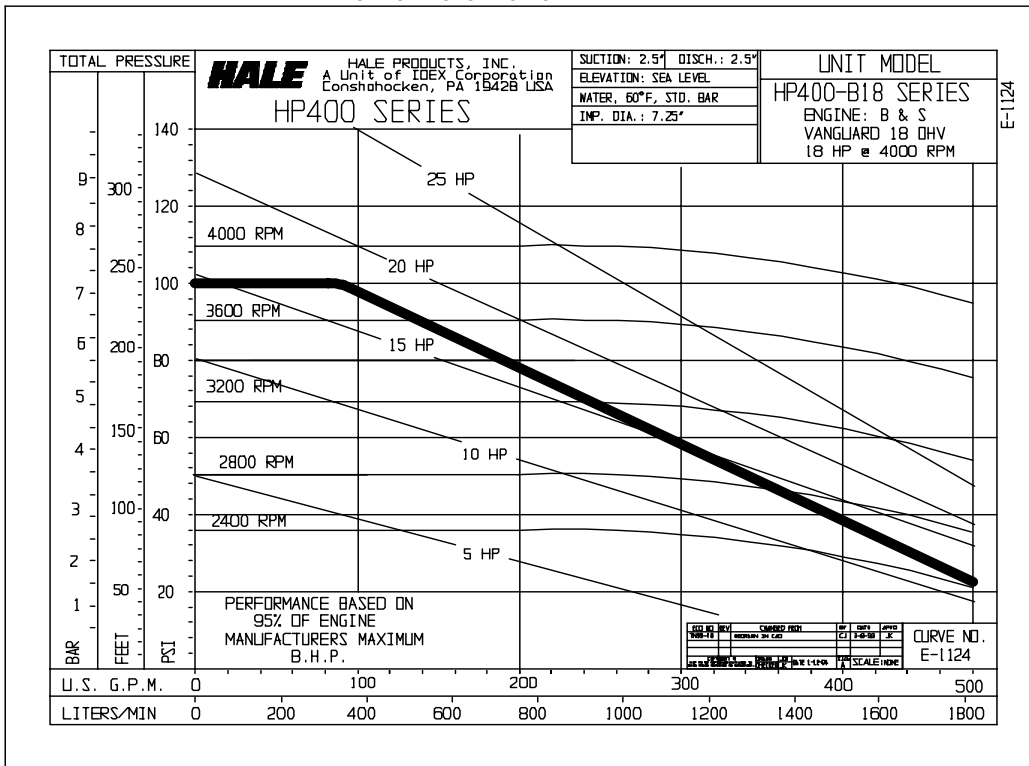
Throttle level.
 Priming controls.
 Master On/Off Switch.
 Start Push-Button.
 Choke Control.
 Low Oil Pressure Warning Light.
Discharge Gauge: 2-1/2 inches (63.5 mm) Dia. Glycerine filled, 0 to 400 PSI (0 to 28 BAR).

AVAILABLE OPTIONS

Suction Adapters.
 Discharge Adapters.
 Hourmeter.
 New exhaust elbow kit for "X" unit.
 New remote instrument panel mounting bracket.
 Protective pump coating for seawater applications.
 Deluxe instrument panel with two gauges
 Base fuel tank
 Exhaust blanket
 Thermal Relief Valve

ENGINE

Make: Briggs and Stratton Vanguard™.
Model: 350400 Series.
Type: Horizontal shaft, air cooled, V-twin OHV.
Horsepower: 18 BHP (13.4. kW) at 4000 RPM.
Torque: 30 foot pound (40.7 N-M). Maximum stroke at 2600 RPM.
Bore x Stroke: 2.83 x 2-3/4 inches (72 x 77 mm).
Displacement: 34-3/4 cubic inches (570 cc).
Oil Capacity: 3.0 pint (1.4 liter).
Optional Fuel Tank: Cross linked Polyethylene.
Electrical: 16 AMP alternator.
Emissions: Meets 1994 California Air Resources Board Standards.



Hale Products
 A Unit of IDEX Corp.
 700 Spring Mill Avenue
 Conshohocken, PA 19428
 TEL: 610/825-6300
 FAX: 610/825-9615
 www.haleproducts.com

Hale Products Europe
 Charles Street
 Warwick, CV34 5LR
 England
 TEL: (44) 01926 623600
 FAX: (44) 01926 623666
 www.haleeurope.com

Hale Products Europe GmbH
 Industriegebiet-Nord
 Benzstrasse 4
 64807 Dieburg Germany
 TEL: (49) 06071 /92665
 FAX: (49) 06071 / 926677

Hale Products Asia
 Singapore Rep. Office
 63 Hillview Ave. #07-08
 Lam Soom Industrial Bldg.
 Singapore 669569
 TEL: (65) 764-3575
 FAX: (65) 764-4020

Note: Hale Products Inc. cannot assume responsibility for product failure resulting from improper maintenance or operation. Hale is responsible only to the limits stated in the product warranty. Product specifications contained in this material are subject to change without notice. Printed in U.S.A. Bulletin 842 Rev 1 7/00 © 2000, Hale Products Inc.

