



HTO 300

3" x 2 1/2"
Centrifugal
Pump

The HTO 300 is a unique centrifugal pump (patented) designed for high temperature applications without requiring external flushes or jacket cooling. Capacities to 500 GPM ... heads to 190 FT TDH. Temperatures to 650°F.

3, 5, 7 1/2, 10,
15, & 20 HP

FLOWS UP TO 500 GPM
PRESSURES UP TO 190 FEET HEAD



WARNING

Consult factory for applications approval and usage. Serious injury or death caused by burns from hot oil may occur.



MP PUMPS, INC.

TECUMSEH PRODUCTS COMPANY

34800 BENNETT DRIVE • FRASER, MI 48026-1686
(810) 293-8240 • FAX (810) 293-8469
800 563-8006

Available in:

Ductile Iron
Construction

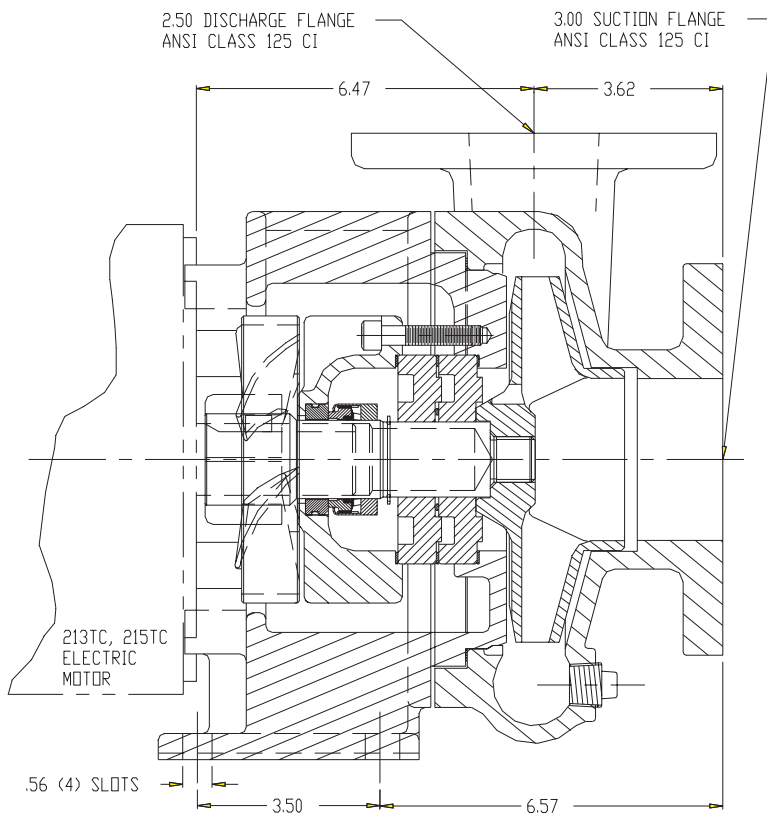
HTO 300

For application in the plastics, chemical, food, and processing industries which require pumping of high temperature fluids.

The HTO 300 utilizes an isolated seal chamber, effectively cooled by a fan clamp which couples the unit to the shaft of a standard 213TC and 215TC motor.

- Standard carbon/ceramic mechanical seal with viton elastomers, stainless steel fitted.
- Carbon graphite isolator bushing separates mechanical seal from high temperature fluids.
- Stainless steel drive sleeve and ductile iron drive clamp couples pump unit to motor.
- Vertical or horizontal discharge.
- With or without electric motor.

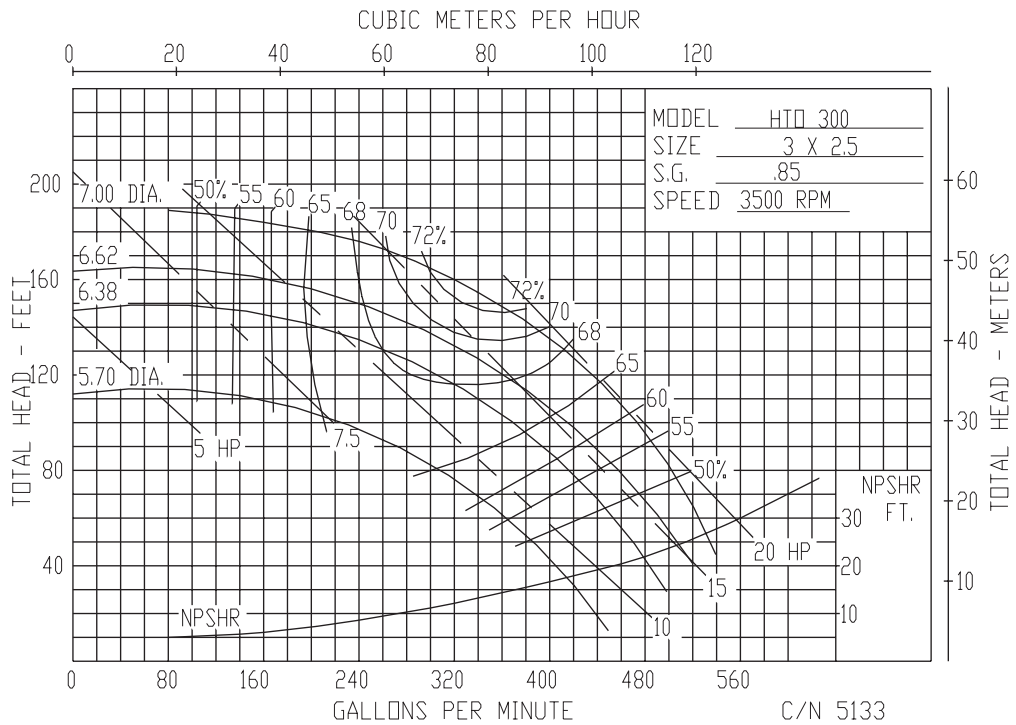
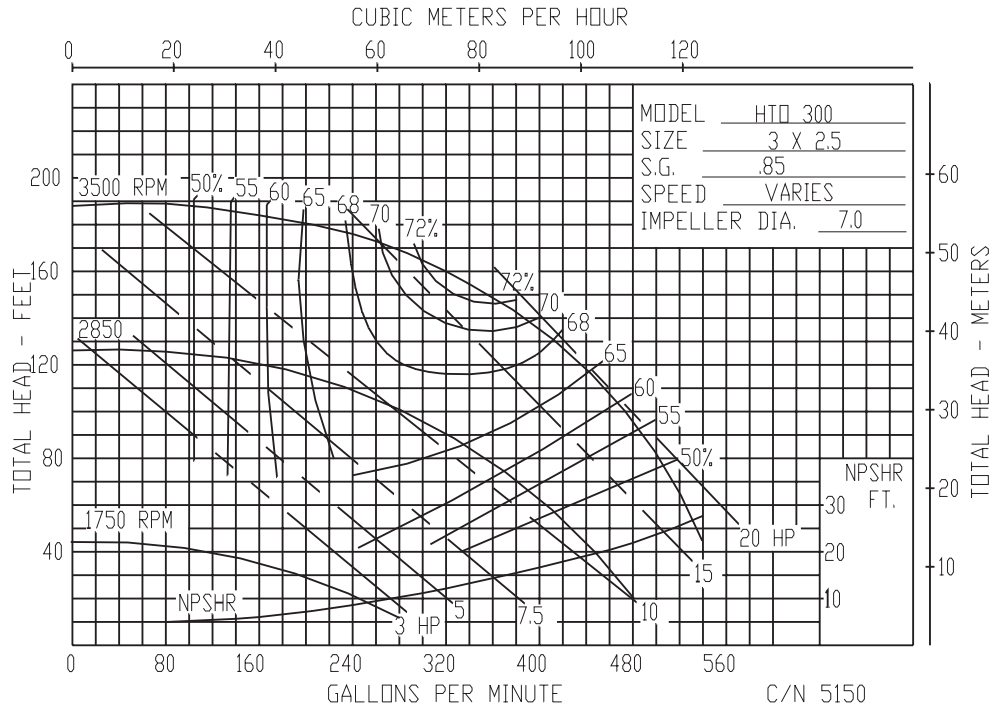
HTO 300 PUMP CROSS-SECTION AND DETAIL



DET.	DESCRIPTION
1	IMPELLER – CAST IRON
2	SEAL ASSEMBLY
3	HEX JAM NUT – S.S.
4	COOLING FAN CLAMP
5	CAPSCREW
6	GASKET
7	CAPSCREW
8	O-RING
9	ADAPTER – DUCTILE IRON
10	ISOLATOR – CARBON GRAPHITE
11	DRIVE SLEEVE – STAINLESS STEEL
12	SEAL HOUSING – DUCTILE IRON
13	LIP SEAL
14	HOUSING – DUCTILE IRON
15	GASKET
16	PIPE PLUG S.S.
17	LOCKWASHER S.S.
18	CAPSCREW CPS

The HTO 300 provides a self-aligning compact installation with an integral air-cooled seal chamber. Precautions must be exercised in the installation to assure safe operation.

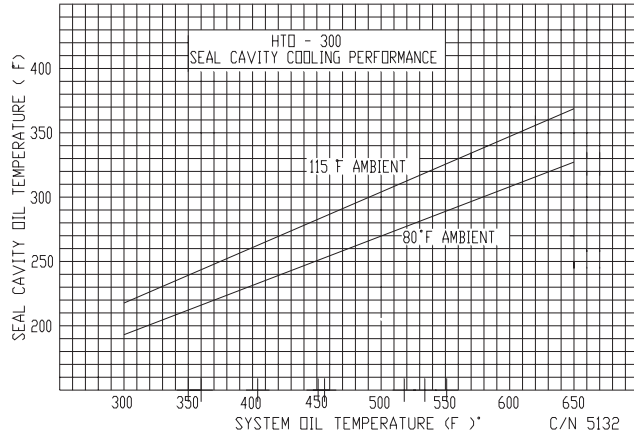
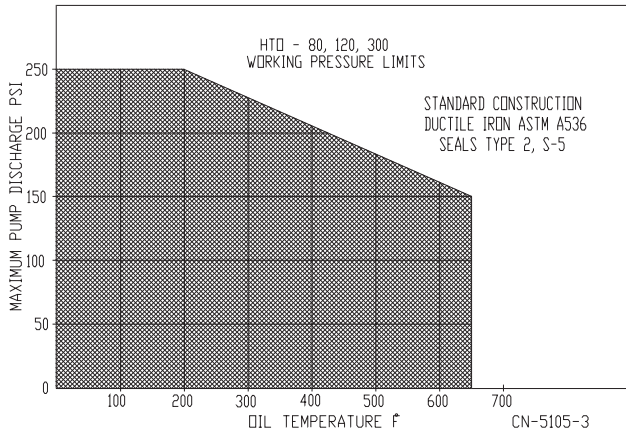
HTO 300 PERFORMANCE CHARACTERISTICS



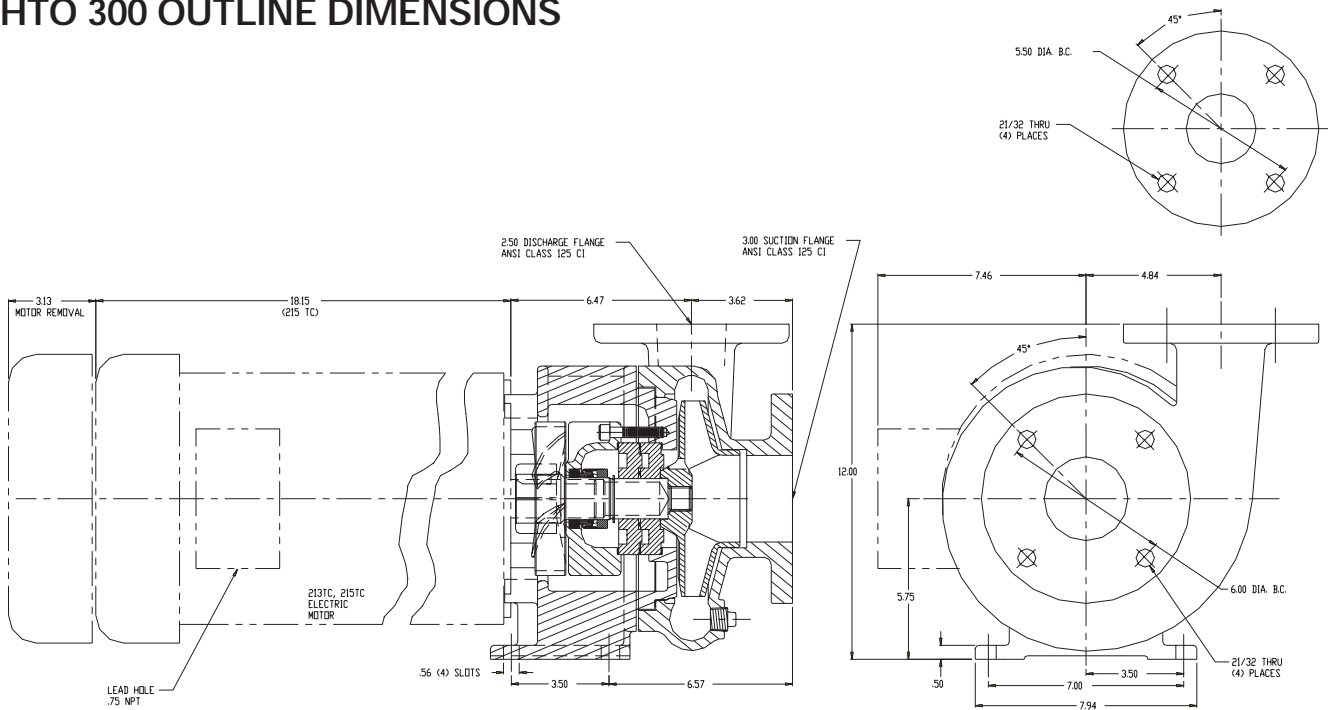
Horsepower requirements based upon 0.85 specific gravity.
 Calculations can be applied for fluids of other specific gravities.

Maximum operating temperature is 650°F.
 Maximum working pressure is 150 PSI.

HTO 300



HTO 300 OUTLINE DIMENSIONS



Pump dimensions certifiable for construction purposes. Motor dimensions dependent upon motor manufacturer.



MP PUMPS, INC.

TECUMSEH PRODUCTS COMPANY

34800 BENNETT DRIVE • FRASER, MI 48026-1686
(810) 293-8240 • FAX (810) 293-8469
800 563-8006

CONSULT FACTORY FOR CHEMICAL COMPATIBILITY.

LITHO IN U.S.A.