

Level SWITCHGAGE® Series For Engine Liquids

L-6795B
Revised 10-99
Catalog Section 15
(00-02-0058)

L150/EL150K1 Series for Coolants, Lube Oils, Fuel and Hydraulic Fluid

Description

The L150 Series Level SWITCHGAGE® is a combination liquid level gauge and low limit switch; each unit includes (1) a chamber with pivotal float, (2) an indicating dial with pointer, and (3) a low level contact. When properly installed and maintained, the float operates the pointer which, in turn, both indicates level during normal operation, and closes a switching circuit if the level falls to the low-limit set point.

Applications

The primary use of the L150/EL150K1 is for engine cooling systems, surge or expansion tanks, condenser radiator or vapor phase systems, pressurized or atmospheric systems. The Level SWITCHGAGE® can also be used to monitor lube oil, hydraulic fluid or diesel fuel reservoirs and activates alarms and/or shut-down at a predetermined minimum level.

These instruments are built for low pressure systems with a maximum of 25 psi (172 kPa) [1.72 bar].

Specifications

L150

Case: Die cast aluminum, poly-urethane coated; approximate dimensions; 4-1/2 x 4-3/4 x 2-3/4 in. (114 x 121 x 70 mm).

Mounting Holes: (2) 9/32 in. (7 mm) diameter at 4-1/2 in. (114 mm) on center.

Float: Brass.

Lens: Polycarbonate.

O-rings: Saturated Nitrile, are suitable for coolant or hydrocarbons. Maximum temperature 250°F (121°C).

Gasket: Neo-cork.

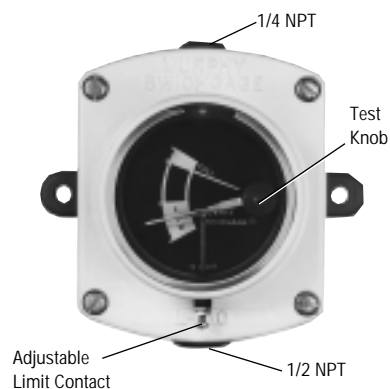
Vent Tube: 1/4 x 5 in. (6 x 127 mm) copper cane with 1/4 NPT x 1/4 in. (6 mm) tube fitting.

Contact Rating: 2 A @ 30 VAC/DC.

Wire: (1) 16 AWG x 26 in. (1.5 mm² x 660 mm) with terminals.

Shipping Weight: 29 oz. (0.82 kg.).

Shipping Dimensions: 5-1/4 x 5-1/4 x 5-1/2 in. (133 x 133 x 140 mm).



EL150K1

Case: Die cast aluminum, poly-urethane coated; approximate dimensions; 5 x 4-3/4 x 2-3/4 in. (127 x 121 x 70 mm).

Mounting Holes: (2) 9/32 in. (7 mm) diameter at 4-1/2 in. (114 mm) on center.

Float: Brass.

Lens: Polycarbonate.

O-rings: Saturated Nitrile, are suitable for coolant or hydrocarbons. Maximum temperature 250°F (121°C).

Gasket: Neo-cork.

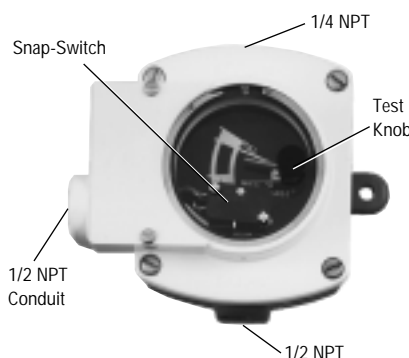
Vent Tube: 1/4 x 5 in. (6 x 127 mm) copper cane with 1/4 NPT x 1/4 in. (6 mm) tube fitting.

Snap-Switch: SPDT rated 10 A @ 125 VAC; 0.5 A @ 125 VDC; 10 A 30 VDC.

Wire: (3) 18 AWG x 14 in. (1.0 mm² x 356 mm).

Shipping Weight: 42 oz. (1.2 kg.).

Shipping Dimensions: 5-1/4 x 5-1/4 x 5-1/2 in. (133 x 133 x 140 mm).



EL150EX

Case: Sand cast aluminum, painted; approximate dimensions; 6-1/2 x 5-3/4 x 5-1/4 in. (165 x 146 x 133 mm).

Mounting Holes: (2) 5/16 in. (8 mm) diameter at 5-1/2 in. (140 mm) on center.

Float: 304 Stainless steel.

Lens: Tempered glass.

O-rings: Saturated Nitrile, are suitable for coolant or hydrocarbons. Maximum temperature 250°F (121°C).

Gasket: Neo-cork.

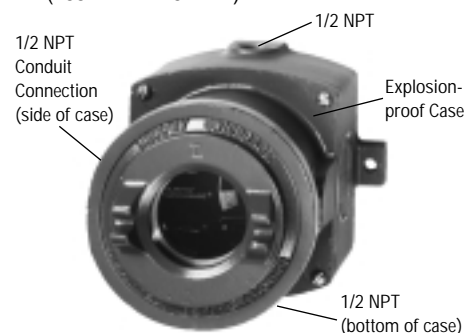
Vent Tube: 1/4 x 5 in. (6 x 127 mm) copper cane with 1/4 NPT x 1/4 in. (6 mm) tube fitting and 1/2 NPT to 1/4 NPT reducer fitting.

Snap-Switch: SPDT rated 10 A @ 125 VAC; 0.5 A @ 125 VDC; 10 A 30 VDC.

Wire: Wired to terminal block.

Shipping Weight: 5 lbs. (2.26 kg.).

Shipping Dimensions: 6-1/2 x 6-3/4 x 6-3/8 in. (165 x 171 x 162 mm).



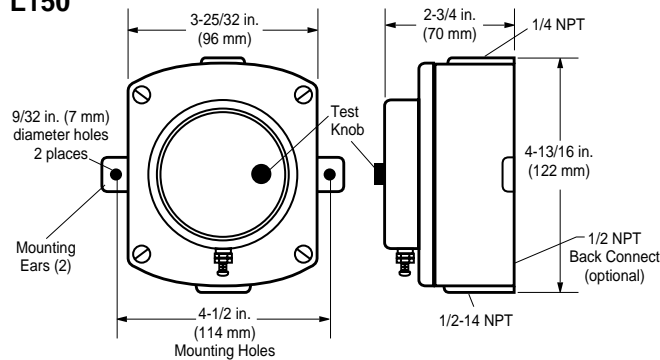
CSA Listed for Hazardous Location:
Class I, Division 1, Group C & D

- Monitors level of coolant, lube oil, diesel fuel and hydraulic fluid.
- Indicating Gauge
- Low Limit Switch
- Float Operated
- Explosion-proof model is available.

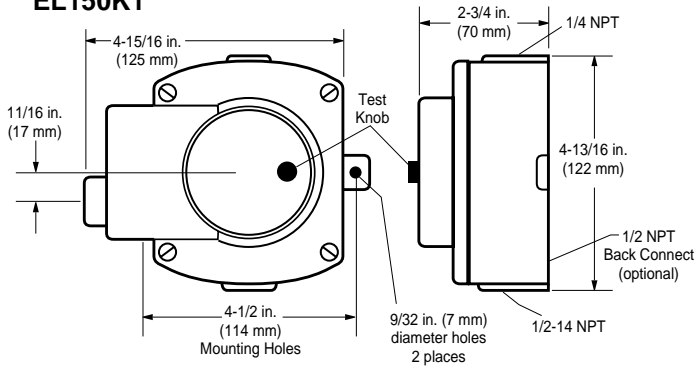


Dimensions

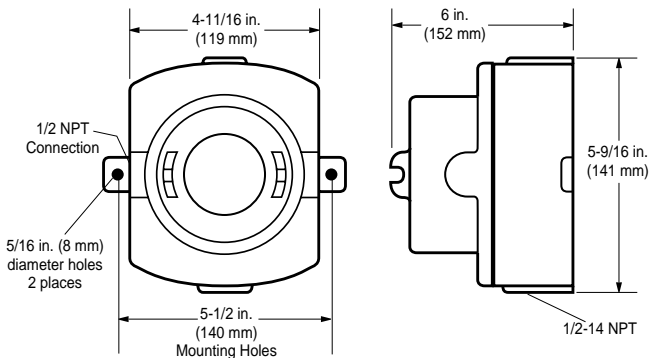
L150



EL150K1



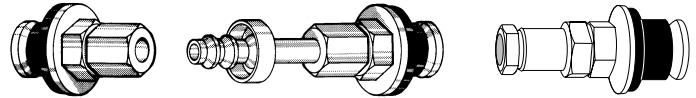
EL150EX



Radiator Fittings

Murphy PS, PS Barbed and PS-D fittings allow the installation of the L150/EL150K1 to the radiator when a fitting is not available.

- **15-00-0107 (PS):** thin wall, 1/4 in. (6 mm) tube fitting.
- **15-01-0167 (PS-Barbed):** thin wall, 1/4 in. (6 mm) tubing or hose.
- **15-01-0202 (PS-D):** for diesel or oil, thick wall (to 1/4 in. [6 mm]), accepts 1/2 in. (13 mm) I.D. hose or 1/4 in. (6 mm) O.D. tubing.



15-00-0107 (PS)

15-01-0167 (PS Barbed)

15-01-0202 (PS-D)

Repair Kits

L150

- | | |
|------------|--------------------------------|
| 15-00-0138 | All parts except case and body |
| 15-00-0101 | Case/body assembly |

EL150K1

- | | |
|------------|--------------------------------|
| 15-00-0139 | All parts except case and body |
| 15-00-0101 | Case/body assembly |
| 15-00-0100 | Lens/switch assembly |

EL150EX

- | | |
|------------|--------------------------|
| 15-00-0110 | Cover and float assembly |
| 15-00-0108 | Lid assembly |
| 15-00-0109 | Switch/terminal assembly |

Accessories

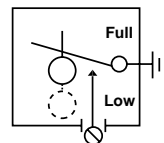
Specify

Description

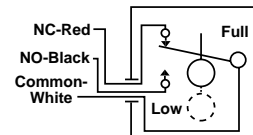
- | | |
|------------|------------------------------|
| 15-00-0107 | Radiator fitting (PS) |
| 15-01-0202 | Radiator fitting (PS-D) |
| 15-01-0167 | Radiator fitting (PS-Barbed) |

Standard Electrical Diagrams

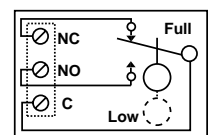
L150



EL150K1



EL150EX



Fittings Kits Order Separately

- 15010235 FM3
- 15010236 FM4
- 15010237 FM5
- 15010238 FM12
- 15010349 CECO

Warranty

A two-year limited warranty on materials and workmanship is given with this Murphy product. Details are available on request and are packed with each unit.

In order to consistently bring you the highest quality, full featured products, we reserve the right to change our specifications and designs at any time.



Frank W. Murphy Manufacturer

P.O. Box 470248; Tulsa, Oklahoma 74147; USA
tel. (918) 627-3550 fax (918) 664-6146
e-mail sales@fwmurphy.com

Frank W. Murphy Southern Division

P.O. Box 1819; Rosenberg, Texas 77471; USA
tel. (281) 342-0297 fax (281) 341-6006
e-mail murphysd@intertex.net

Frank W. Murphy, Ltd.

Church Rd.; Laverstock, Salisbury SP1 1QZ; U.K.
tel. +44 1722 410055 fax +44 1722 410088 tlx 477088
e-mail sales@fwmurphy.co.uk

Frank W. Murphy Pte., Ltd.

No. 2 Tuas South Street 2, Sprintecs Bldg., #02-01/02
Singapore 638042
tel. +65 863-1398 fax +65 863-0208
e-mail fwmsales@fwmurphy.com.sg

Murphuk Pty., Ltd.

1620 Hume Highway; Campbellfield, Vic 3061; Australia
tel. +61 3 9358-5555 fax +61 3 9358-5558
e-mail murphy@macquarrie.com.au

Murphy de México, S.A. de C.V.

Bld. Antonio Rocha Cordero 300, Fracción del Aguaje
San Luis Potosí, S.L.P.; México 78384
tel. +52-48-206264 fax +52-48-206336
e-mail murmxsl@sanluis.podernet.com.mx

Murphy Switch of California

P.O. Box 900788; Palmdale, California 93590; USA
tel. (805) 272-4700 fax (805) 947-7570
e-mail sales@murphyswitch.com

Frank W. Murphy France

tel. +33 1 30 762626 fax +33 1 30 763989